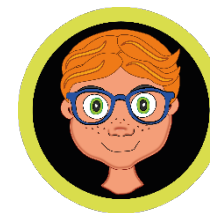




British Values Audit – KS2 (Year 3)



For further information regarding the mapping of British values, please see the schemes of work.



Feelings and me	👍		👍	👍	
Resilience and self-esteem	👍		👍	👍	
Exercise and wellbeing	👍		👍	👍	
Personal identity	👍	👍	👍	👍	👍
Strengths and interests	👍		👍	👍	
Personal safety and risk	👍		👍	👍	
Fire safety			👍	👍	
Healthy eating	👍		👍	👍	
What is a habit?	👍		👍	👍	
Healthy choices	👍		👍	👍	



British Values Audit – KS2 (Year 3)



For further information regarding the mapping of British values, please see the schemes of work.



Role models	👍		👍	👍	
Manners and politeness	👍		👍	👍	
Family and me			👍	👍	👍
People who care for me			👍	👍	
Caring for others	👍		👍	👍	
Seeking permission	👍		👍	👍	
Privacy and boundaries	👍		👍	👍	
Friendship boundaries	👍		👍	👍	
Respectful behaviour	👍		👍	👍	
Bullying or teasing?	👍		👍	👍	



British Values Audit – KS2 (Year 3)



For further information regarding the mapping of British values, please see the schemes of work.



Jobs and sectors	👍		👍	👍	
Careers and skills	👍		👍	👍	
Targets and goals	👍		👍	👍	
Career routes and qualifications	👍		👍	👍	
Stereotypes and women in STEM	👍		👍	👍	
Rules and laws	👍	👍	👍	👍	
Rights and responsibilities	👍		👍	👍	
E-safety	👍		👍	👍	
Age-appropriate content	👍		👍		
Why is the news important	👍		👍	👍	