



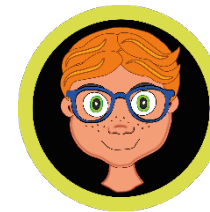
British Values Audit - KS2 (Year 6)



For further information regarding the mapping of British values, please see the schemes of work.



Being Healthy – Diet / Exercise	👍		👍	👍	
Habits and addiction	👍		👍	👍	
Caffeine and energy drinks	👍		👍	👍	
What is Alcohol?	👍		👍	👍	
Drugs	👍		👍	👍	
Vaping danger	👍	👍	👍	👍	
Body image	👍		👍	👍	
Girls' puberty	👍		👍	👍	
Boys' puberty	👍		👍	👍	
Hormones and emotions	👍		👍	👍	
Mental health and symptoms of illness	👍		👍	👍	
FGM Awareness	👍		👍	👍	



For further information regarding the mapping of British values, please see the schemes of work.



Positive relationships	👍	👍	👍	👍	
Disagree respectfully	👍		👍	👍	
Positive Male Role Models	👍		👍	👍	
Family and commitment	👍		👍	👍	👍
Love and abuse			👍	👍	
Cyberbullying and harassment	👍		👍	👍	
Consent and unwanted contact	👍		👍	👍	
Sexual harassment	👍		👍	👍	
Attraction and crushes	👍		👍	👍	👍
Human reproduction	👍	👍	👍	👍	



For further information regarding the mapping of British values, please see the schemes of work.



Asking for help and advice	👍		👍	👍	
Identity and community	👍	👍	👍	👍	👍
Diversity and celebrating difference	👍		👍	👍	👍
Social media			👍	👍	
Online privacy and data	👍		👍	👍	
What is money?	👍		👍	👍	
Attitudes to money	👍		👍	👍	
Money and the Cost of Living	👍		👍	👍	
New schools and classes	👍		👍	👍	
Topical lesson – Cost of living	👍		👍	👍	