



# Applecroft School

Nurturing Potential, Inspiring Minds,  
Changing Lives

## Welcome Meeting

Wednesday 3rd September 2025





# Meet the Team



Mrs Lisa Withe  
Headteacher  
DSL



Mr Paul Wyatt  
Deputy Head  
DSL



Ms Ruth Johnson  
Assistant Head  
SENDCo  
DSL



Charlie our  
School Dog



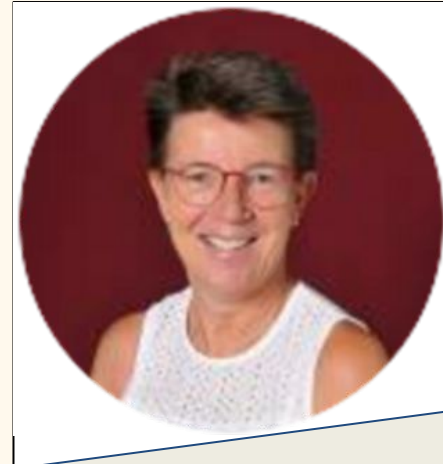
# Meet the Team



Mrs Odette Coe  
Finance &  
Business Manager  
Lead First Aider



Ms Jale Apicella  
Family Link  
Support Worker &  
DSL



Mrs Gill Williams  
Finance Assistant  
Lead First Aider



# Meet the Reception Team



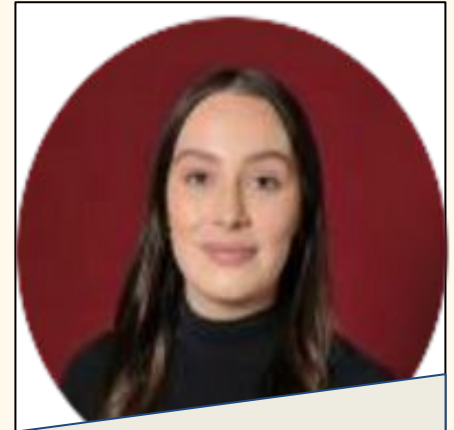
Miss Eloise Yates  
Seurat Teacher  
Early Years Lead  
DSL



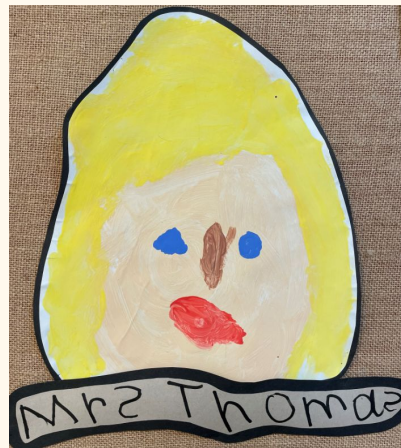
Mrs Becky Thomas  
Kandinsky Teacher  
Tuesday - Thursday



Mrs Aleks Marsham  
Kandinsky Teacher  
Monday & Friday



Mrs Fern Warden  
Kandinsky Teacher  
January 2026

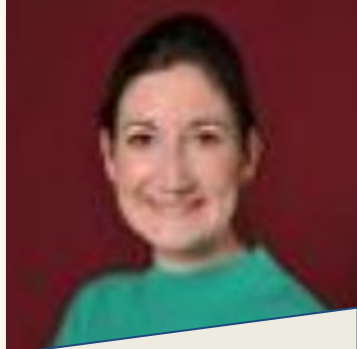




# Meet our wider Reception Team



Miss Carly Cashman  
Early Years  
Practitioner



Mrs Stacey Flack  
LSA



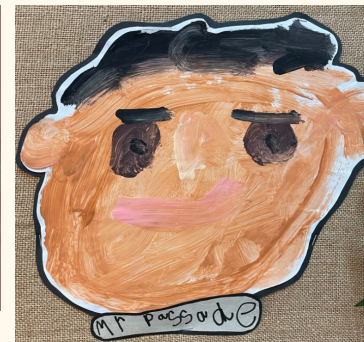
Mrs Rachel  
Varnals-Scrace  
Early Reading  
Teacher



Mrs Vikki Wake  
PPA - RE Teacher



Mr Bradley  
Passade  
PPA - PE Coach





# Attendance

Attendance - 96% or above

If your child has a Reception place - they are expected in school full-time even if they are not yet 5

**MOMENTS  
MATTER,  
ATTENDANCE  
COUNTS.**

Descriptor	Threshold attendance	Actual attendance	Whole days absent each year	Learning hours lost each year	The impact over 5 years
Excellent	100%	190 days	0	0	0
	99%	188 days	2	10	
Good	98%	186 days	4	20	
	96%	182.5 days	7.5	37.5	
Unsatisfactory	95%	180.5 days	9.5	47.5	Quarter year missed
	94%	179 days	11	55	
	93%	177 days	13	65	Half year missed
	90%	171 days	19	95	
Major issue	88%	167 days	23	115	
	86%	163 days	27	135	
	83%	158 days	32	160	
Serious concern	81%	154 days	36	180	One whole year of school missed
	80%	152 days	38	190	
Critical	75%	143 days	47	235	

**97%** and above - pupils with attendance at this level throughout their school career will make the best progress, this should lead to better prospects for work, college and university

**90%** - pupils with attendance at this level are missing a month of school a year and may not reach their target grades. Progress will be affected and viewed negatively by employers and further education

**85%** - pupils with attendance at this level will find it difficult to keep up and their chances of achieving their potential significantly damaged

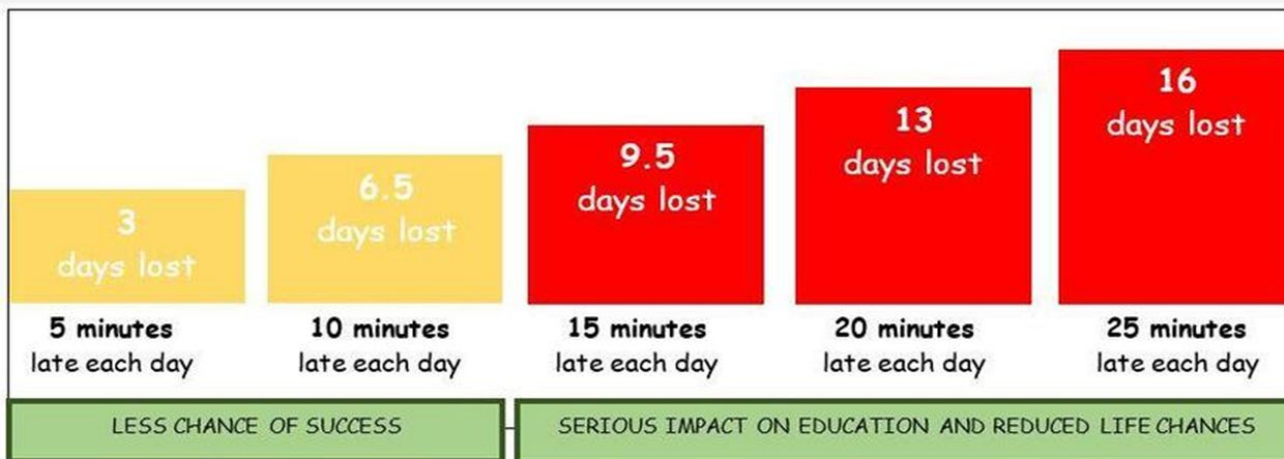


# Punctuality

The school day begins at 8:45am sharp!

Gates open at 8:30am and doors to the school building at 8:35am

Registration period is 8:35-8:45am - children should be in class by 8:45am when the register closes





# Absence / Illness

Please do not send your child to school if he/she is not well

Please phone the school office (Mrs Lamaison) by 8:15am and leave a message if your child is going to be absent - please state what the reason for absence is (including type of illness)

If your child has sickness and/or diarrhoea, he/she should not return to school until a period of 48 hours has elapsed since the last time they were unwell

Support and Guidance

['Is my child too ill for school?'](#) - NHS guidance & advice

['Healthier Together'](#) - guidance & support from healthcare professionals across Dorset, Hampshire & the Isle of Wight

['Parents Guide to Keeping Children Healthy...'](#) - guidance from GOV.UK

**MOMENTS  
MATTER,  
ATTENDANCE  
COUNTS.**





# Parent Volunteers

We are hoping to be able to welcome back our wonderful parent volunteers this year.

If you are interested in supporting the children in school you will need to attend one of the two planned volunteer safeguarding meetings:

Friday 12th September @ 9am

or

Monday 15th September @ 2:30pm

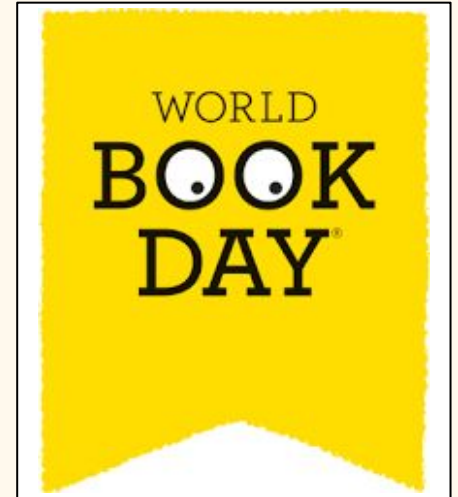
Many Hands Make Light Work



Thank You For Being So Kind



# Special Events / Weeks / Days





# Our Behaviour & Discipline Policy





# What your child needs for school in Reception

Named School Uniform

Named PE kit in a named drawstring bag

Named water bottle-containing water, not squash.

Named red school book bag (no backpacks) - these are kept in trays in class.  
1 key ring only please!



Named sunhat/winter hat, scarf and gloves

Please make sure your child's belongings are labelled and easily identifiable to your child. There will be 60 similar items!



# School Uniform

School colours



School logo



Red jumper or cardigan



Plain grey trousers / skirt / pinafore

White or red polo shirts (red only for children in EYFS)  
or plain white blouse/skirt



Grey or red tights/grey, red or white socks

Plain, black sturdy shoes (boots are not permitted)

Welly Boots & Waterproofs



# School Uniform

## PE Kit:

White t-shirt

Plain black shorts

Plain black jogging bottoms

House t-shirt (for house events)\*

Black school hoodie / Plain black hoodie

Plain black trainers



## PE Days:

Wednesday - Sports Coach - come to school in PE kits

Friday - Class Teachers - **bring kit to school in PE bag**



## Reception P.E. days are Wednesday and Friday

Wednesday

Children **come to school in P.E. kit**

Wednesday's P.E. is taught by Mr Passade



- White T-shirt
- Black shorts or black jogging bottoms
- Black hooded sweatshirt
- Black trainers

Friday

Children **change** at school

Friday's P.E. is taught by Teachers



- White T-shirt
- Black shorts
- Bare feet
- No trainers or socks





# Book change days are Wednesday and Thursday

**Wednesday – Library book**

**Thursday – Little Wandle book**

Please ensure your child's Little Wandle book is in school every day to enable us to hear readers throughout the week.





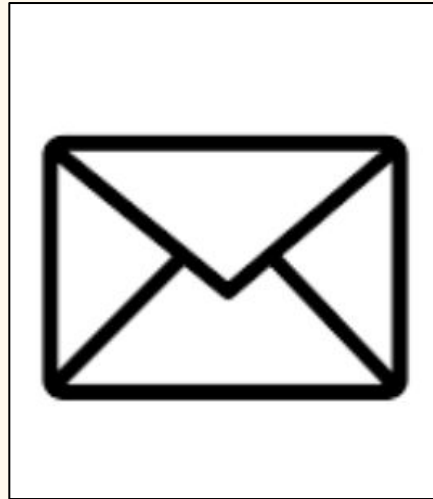
# How we communicate with you



'What are we learning in Reception poster' and weekly Reception summary including Home Learning activities

Key dates and events

WOW teaching and learning moments - linked to Early Years curriculum and current learning



School Newsletter (with termly updates from the EYFS)

PTA News and Events

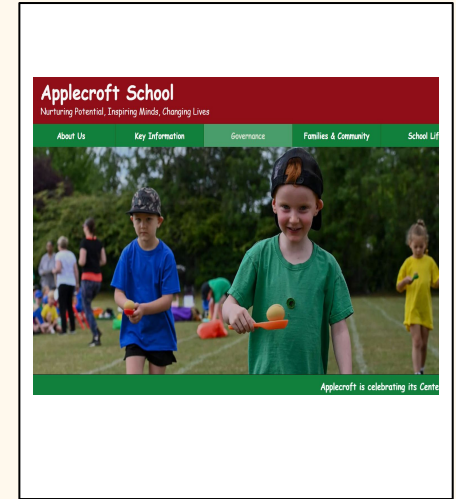
Communication from School Office, Mrs Withe or Reception Team

FIRST AID messages (e.g. head bumps)



Arbor profile

End of year report



Access useful information

Weekly Posters

Monthly School Newsletters

School Calendar



[admin@applecroft.herts.sch.uk](mailto:admin@applecroft.herts.sch.uk)



# School Calendar

## Calendar

[Home](#) >> [School Life](#) >> [Calendar](#) >> [Reception Parent/Carer Information Meeting](#)

### Reception Parent/Carer Information Meeting

Start: 17/06/2024 18:15

End: 17/06/2024 19:30





# Tapestry in Reception

Appleroff School

Observations Children Reflections Reports Tracking - Memos Activities Documents CPD Management System

Observations / What are we learning in Reception next week? Summer 2, Week 3 - 16th June 2025

What are we learning in Reception next week? Summer 2, Week 3 - 16th June 2025

Authorised by Miss Yates added 12 Jun 2025 05:09 PM  
Approved by Miss Yates on 13 Jun 2025 04:32 PM

View History Export

Liked by

- Allie Horton
- Julia Nicholls
- Suzanne Donnelly-Burns
- Victoria Kersey

What are we learning in Reception this week?

Sports Morning at 9.10am, Weds 18<sup>th</sup> June

Our structured story: **Clean Up!**

Mathematics: We will be continuing our learning about odd and even numbers. We will begin our new unit of counting beyond 20 by revisiting ten and some more and practising careful counting of objects.

Communication, Language and Literacy: We will be developing our vocabulary by learning the following new words: rescued, tangled, ruining, notice, collected, brainwave, wofling, release.

Understanding the World: Have you been to the beach/swim in the sea? What is an island? What are wild animals? Do you know the names of different sea creatures? What is an animal sanctuary? Do you know what plastic is? What is rubbish/litter? Why is this bad for the environment?

Expressive Art & Design: Use different types of plastic junk modelling to make sea creatures. Make a poster telling people to pick up their rubbish!

Personal, Social & Emotional: We will talk about how to give our bodies a workout. We will know what the word exercise means and how to keep my body fit and healthy.

LeaderinMe: We will learn to listen with our bodies and heart.

Phonics: Reviewing Phase 3 graphemes and reading words with long vowel sounds: joint, smart, flight, gloom. Read at least 2 x per week with your child and add to Brown Reader!

We are working on securing our pencil grip. Mr Passade - Monday (Rackets, Bats, Balls and Balloons) Miss Yates / Ms Rieck - Friday (Games for understanding) We change ourselves on a Friday!

Documents

Grammar, Clarity, Reception, Su2, ...

Pronunciation phrase	Initial/end sounds: What's in the box?	New GPC and mnemonic	Formation phrase	
Show your teeth and let the s hiss out ssss	sock sun star snake	s snake 	Down the snake from head to tail.	s snake 
Open your mouth wide and make the a sound at the back of your mouth a a a	ant apple arrow astronaut	a astronaut 	Around the astronaut's helmet and down into space.	a astronaut 
Open your lips; put the tip of your tongue behind your teeth and press t t t	teddy toast teeth tiger	t tiger 	Down the tiger and across its neck.	t tiger 
Bring your lips together, push them open and say p p p	pencil pizza peg penguin	p penguin 	Down the penguin's back, up and around its head.	p penguin 

**Cut these out and practice at home!**

is the

I put

pull full

Match the words to the pictures

Reception Phase 4 Summer 1

1 2 3

4 5 6

© 2021 Woodwork Learning Trust. All rights reserved. Version December 2021

is the I put pull full as and no it the push of we he gas and her go into no to she

said have like some love come were here do t to little there when what one



# Reception Noticeboard / Open Door Policy

RECEPTION



TAPESTRY  
ONLINE LEARNING  
JOURNAL

Today's sound is...

Phase 4, CVCe and CVC words with long vowel sounds.

like in the word...

toak  
join  
bleed  
growl  
sport  
steep

**Book change days are Monday and Thursday**

Monday - Libby's book  
Thursday - Little Wandle book

Visit [www.libraryofthings.com](https://www.libraryofthings.com) every Friday to read with us!

In Reception, we are reading...



Monday

P.E.  
Library

Tuesday

Wednesday

Thursday

Parent consultations  
Book swap day

Friday

P.E.

**APPLECROFT PARENT TEACHER ASSOCIATION**

**FROSTY FRIDAY**



**JUNE 2024**

Parent Secret stories

SUN	MON	TUE	WED	THUR	FRI	SAT
28	29	30	31	1	2	3
4	5	6	7	8	9	10
11	12	13	14	15	16	17
18	19	20	21	22	23	24
25	26	27	28	29	30	1
2	3	4	5	6	7	8
9	10	11	12	13	14	15
16	17	18	19	20	21	22
23	24	25	26	27	28	29
30	1	2	3	4	5	6

**Music Themed Week**

**Sports Day Monday 18th June 1.15 - 3pm**

**What are we learning in Reception this week?**

Our structured story: Clean Up!

- Mathematics:** Counting at least 20 objects, counting forwards and backwards from any given number.
- Communication, Language and Literacy:** Understanding the beginning, middle and end of a story.
- Expressive Art & Design:** Creating a book cover to share their own story.
- Personal, Social & Emotional:** Understanding that we need to look after our environment.
- Phonics:** Knowing that words are made of sounds.
- Physical Development:** Following simple instructions.

Dear Parents/Carers,



# Learning in the EYFS

## 7 Areas of Learning

### Prime Areas:

Communication and Language

Physical Development

Personal, Social and Emotional  
Development

### Specific Areas:

Literacy

Mathematics

Understanding the World

Expressive Arts and Design





# Learning in the EYFS

Children should mostly develop the 'prime' areas first. These are essential for a child's healthy development and future learning. As children grow, the prime areas will help them to develop skills in the 4 specific areas.

Teachers plan learning and activities across all 7 areas and the flexibility of the curriculum allows staff to follow the children's unique needs and interests.

Phonics - Little Wandle

CUSP Curriculum  
Structured Storytime






# Focus Observations

We carry out focus observations each Term. We will communicate this to you via Tapestry and in our display cabinet.

Your child will be one of 3 children (in the class) focused on in the same week.

The week before you will receive a letter informing that your child will be a focus observation child for the following week.

After your child's focus observation week has been completed, you will be invited in to have a chat with their class teacher about their progress, development and any next steps they have identified.

  
**Applecroft School**  
Nurturing Potential, Inspiring Minds, Changing Lives

Dear Parents and Carers,

Re: Focus Child Observations

We will be focusing on \_\_\_\_\_. We will be observing them while they explore and learn to find out more about their interests and how they are progressing.

We value the knowledge and understanding you have of your child and would really appreciate you sharing this with us so that together we can plan activities to meet your child's needs. This will help us plan for their future learning and development.

Is there anything significant happening in your child's life at the moment e.g. visits, holidays, new pets, family celebrations?

Do you have anything you would like to ask us about your child's progress and development?

We will be focusing on:

1. Phonics, comprehension, early reading, & writing (Literacy)
2. Self-regulation, Managing Self and building relationships
3. Understanding the world & listening, attention and understanding

Please upload pictures of any of the following onto Tapestry for your child to share with us:


- Favourite toys, food, personal items and current interests
- Family photos from a recent occasion or event
- Any items that tell us about your family

Please return this letter with the necessary photo uploads on Tapestry before your consultation. We are looking forward to seeing you at our consultation!

Miss Eloise Yates  
Seurat Class Teacher,  
Year Group Leader,  
Early Years Phase Leader

Mrs Fern Warden  
Kandinsky Class Teacher

Ambition	Leadership	Kindness	Supportiveness	Respect	Honesty	Determination	Resilience
----------	------------	----------	----------------	---------	---------	---------------	------------



Applecroft Road, Welwyn Garden City, Herts. AL8 6JZ.  
Company Number 07917745

Website: [www.applecroft.herts.sch.uk](http://www.applecroft.herts.sch.uk) Email: [admin@applecroft.herts.sch.uk](mailto:admin@applecroft.herts.sch.uk) Tel: 01707 323758 X (Twitter): @applecroftuk



# Focus Consultations

Focus observation meetings held termly to discuss your child's progress. These are offered each term in order to work closely with parents and teachers.

Discussing progress and where children are currently working towards in the 7 areas of learning.

We will share the document, with times and dates, via email.

If you have any questions please speak to your child's class teacher.

Please make a note of your time and date.

We will not rearrange if you choose not to turn up.



## Applecroft School

Nurturing Potential, Inspiring Minds, Changing Lives

Dear Reception Parents and Carers,

**Re: Reception Focus Child Consultations - Autumn Term 2024**

Throughout the Autumn Term in Reception, we will hold Focus Child Consultations. The purpose of these meetings gives you the opportunity to discuss your child's focus week, their learning and development and how they have settled into Reception so far. The table below informs you of the week you are required to meet with your child's class teacher.

The Reception Team will be available to meet after school on a **Tuesday, Wednesday or Thursday**, straight after dismissal, at 3.20pm. Each appointment will last approximately 10 minutes. If these days are not convenient, please speak to your child's class teacher and they will try their best to accommodate you. Miss Yates and Mrs Warden will send out an additional letter to you closer to the time to gather some information from you in preparation for your child's focus week.

	Seurat			Kandinsky		
3.20pm	Tuesday	Wednesday	Thursday	Tuesday	Wednesday	Thursday
w/c 16 <sup>th</sup> September	Robbie	Felix	Freddie	Kiaan	Peter	Aydin
w/c 23 <sup>rd</sup> September	Edric	Alba	Ares	Arrohi	Benedict	Alexander
w/c 30 <sup>th</sup> September	Edith	Erica	Eoin	Benjamin	Eddie	Elouise
w/c 7 <sup>th</sup> October	Evie-Mae	Grace	Hattie	Elsie	Eve	Ezra
w/c 14 <sup>th</sup> October	Isla	Joshua	Henry	Florence O	Iarla	Jude
w/c 21 <sup>st</sup> October	Liana	Maria	Max	Koha	Lily	Louie
Half Term						
w/c 11 <sup>th</sup> November	Nadia	Noah	Olivia	Florence P	Maisie	Monty
w/c 18 <sup>th</sup> November	Oliwier	Oriene	Paisley	Nikilan	Nkaj	Rose
w/c 25 <sup>th</sup> November	Phoebe	Ruan	Toby	Scarlett	Sophie	Tabitha
w/c 2 <sup>nd</sup> December	Viviana	Zac	Ziggy	Tilly	Zachary C	Kylan

Yours sincerely,

Miss Eloise Yates  
Reception, Seurat Class Teacher and Early Years Leader





# Assessment in EYFS

<b>Nursery</b>	<b>Reception</b>
Observations	Observations
Focus observations	Focus observations
Adult directed Teacher based assessment	Adult directed Teacher based assessment
On entry assessments	Reception Baseline Assessment- RBA
	Phonics- Little Wandle
	Writing Moderation
	EYFSP

A summative report is compiled at the end of the year, in July, and highlights next steps for learning prior to entry to Year One.

The EYFS profile (EYFSP) is a summative assessment of learning across all 7 areas and is completed in the final half term of Reception. This is shared with parents following statutory guidance.



# School Procedures



**Birthday books only**

**No gifts bags/party bags and toys**

**No cakes/ sweets as we are a 'Healthy School'**

**We are a 'NUT FREE school'**



**Phone or email the school office (Mrs Lamaison) before 2pm**

**Leave a message if your child is going to have an alternative pick up arrangement**

**Any sent after 2pm are likely to not be picked up**



**We ask that routine dentist & doctor appointments take place out of the school day whenever possible**

**Phone or email the school office (Mrs Lamaison)**

**School Office not to be confused with 'Reception'.**

[admin@applecroft.herts.sch.uk](mailto:admin@applecroft.herts.sch.uk) - Mrs Lamaison (Office)



## School Dinners



- All children in reception are entitled to receive universal free school meals - which means you do not need to pay for your child's school meal
- Meals are provided by the catering company Dolce
- All food must be ordered in advance via Dolce's ordering system SchoolGrid - the reason food needs to be ordered in advance is so that the cook knows how many of each type of meal needs to be prepared - this helps to keep the cost per meal as low as possible
- Parents and carers will be able to access Schoolgrid from mid August once you have received an email containing your username and password (check your spam)
- If your child has any food allergies or specific dietary requirements these can be noted within SchoolGrid - this will mean that any meals containing ingredients your child should not have will not be visible for you to choose. If your child has a severe dietary restriction Dolce are more than happy to provide a separate menu for your child - please speak to me at the end of the presentation.



# Keeping children safe is everyone's responsibility



The use of mobile phones by adults are NOT permitted on the school site.  
All phones **must** be out of sight and not actively used on the school site for safeguarding reasons.

Smartwatches - can we worn but must be silenced and all functions except for the watch to be disabled whilst at school (some watches have a 'school mode' that does this)

Positive Feedback & Suggestion boxes/emails

Polite reminder if coming to school on a bike or scooter - please be respectful and mindful of other families and wait outside the school.

# A typical day in Reception

Doors open at 8:35am / Close at 8:45am sharp

Register taken

'Funky Fingers'/Dough Disco/Daily Mile

Phonics - Little Wandle

Child Initiated Learning - BUSY TIME

Adult directed activity - Maths

Lunch

Adult directed activity - Literacy - Structured Storytime

Reading & letter formation practice groups

Child Initiated Learning - BUSY TIME

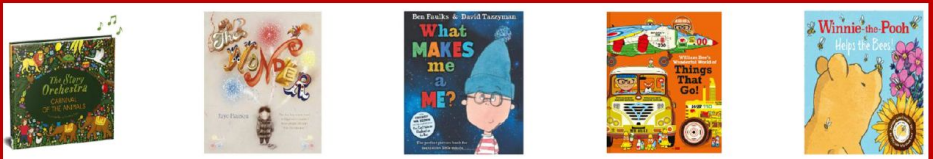
Book vote Story/ Singing





# Our CUSP Literature Spine

## Reception CUSP Literature Spine – Structured Story Time

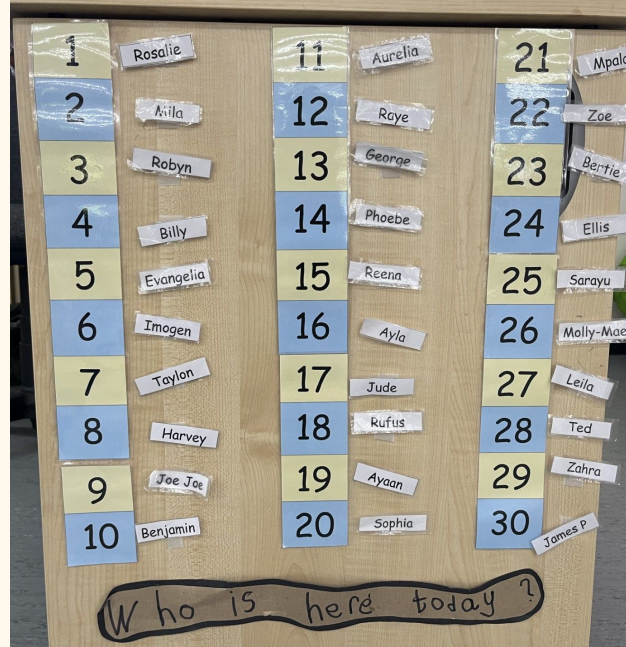


Here are just a few other favourite texts and Nursery Rhymes we explore in Reception:

					
Head, shoulders, knees and toes	Wheels on the bus	Five Currant Buns	1 potato...		
Incy Wincy spider	Hey Diddle Larwill	Miss Polly	Old Mother Hubbard		
Humpty dumpty	Five Little Ducks	Ten Green Bottles	Jack and Jill		
Twinkle Twinkle Dock	Hickory Dickory Dock	Hot Cross Buns			



# Our Classroom Systems





# Reception Morning and Afternoon sessions

On Monday 8th/Tuesday 9th/ Wednesday 10th September

Enter playground via the Playground gate. Drop off at Reception entrance.

Pick up at Reception Classroom exits (Seurat / Kandinsky).

Parents do not stay. Children wear uniform for these sessions.

Morning 9-11.30am Afternoon 1.30-2.45pm.





# Supporting Smooth Transitions

Use the QR Code below to download a digital version of activity ideas that will help you, as parents and carers, to prepare your child for their next step into school.



**Ready Families** | **Ready Schools**  
**Ready Child**

## Early Years

Supporting Smooth Transitions | Learning at Home

Everything you do with your child can help them to be strong confident, independent learners who are ready to start school.

Use the QR Code below to download a digital version of activity ideas that will help you as parents and carers to prepare your child for their next step into school.

Time spent doing things together at home and seizing learning opportunities will really help your child find out new things and develop skills that will help learning at school. Each card will provide you with ideas of activities you could try in different places at home or out and about as well as Top Tips to encourage further play and learning.

These cards have been developed as part of the Supporting Smooth Transitions project commissioned by Herts County Council, delivered by HFL Education. HFL Education is the largest school company in the UK dedicated to improving education for young people.

**EVERY CHILD IN HERTFORDSHIRE DESERVES THE VERY BEST START POSSIBLE.**

For further information please contact [eytransition@hfleducation.org](mailto:eytransition@hfleducation.org)



# Important Dates

- Home Visits take place from tomorrow - Thursday 4th and Friday 5th September for non-Applecroft children.
- Morning and Afternoon sessions for Reception children begin on Monday 8th to Wednesday 10th. Please make a note of YOUR date and TIME.
- Your child's first FULL day is on Thursday 11th September.
- Parent Volunteer Meetings - Friday 12th September @ 9am or Monday 15th September @ 2:30pm
- 'Early Reading & Little Wandle' Meeting for ALL Reception parents/carers - Tuesday 16th September, @ 6-7pm.
- Reception 'Stay and Read'. Kandinsky is Thursday 18th and Seurat's is Friday 19th - both @ 2:30pm. Please make a note of this!
- Reception Baseline Assessments conducted (in school) from 22nd September.
- Focus Consultations for Autumn Term will be held on a Thursday. They will begin Thursday 25th September. We will send information to you via email on Friday 12th. Please make a note of your Thursday and TIME.
- Reception Parent/Carer lunches 11:30-12:30pm, Friday 3rd, Monday 6th and Wednesday 8th October.