

# Please can you help?

We need help in replenishing our junk modelling resources:



# What are we learning in Reception this week?

EYFS Sports Morning at 9:10am - 18<sup>th</sup> June

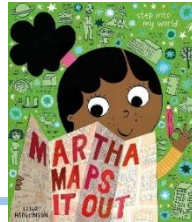
Tricky words  
of the week:

out today

Week  
2

Our structured story:

Martha Maps It Out

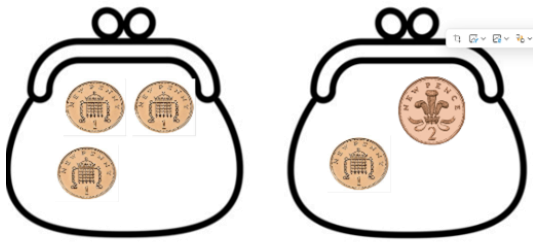


sunhats and bottles

1  
2  
3

## Mathematics

We will continue to double and halve amounts of money.



We will review our learning of odd and even numbers.

## Expressive Art & Design

Using mixed media and small world to create large scale maps of:

- Local area, school, home, garden
- The World, Solar system

## Communication, Language and Literacy

We will be developing our vocabulary by learning the following new words: universe, solar system, flattened, sphere, urban jungle, succulent, telescope, adventure, wonder

## Understanding the World



What is a map? What are they used for? What is the universe? What is the moon? What is an astronaut? What do they do? What is weather? What types of weather do you know? What are the continents?

## Personal, Social & Emotional

We will talk about which foods we need to eat to stay healthy. We will talk about which foods should only be eaten sometimes.

## LeaderinMe

We will describe how sharing helps everyone win.

## Phonics

root words ending in:  
ing, ed, /t/, /id/, est  
jumping, snapping,  
helped, cracked, melted

Read at least 3 x per week  
with your child and add to  
Boom Reader!

We are working on  
securing our pencil grip.

Mr Passade - Monday  
(Rackets, Bats, Balls and  
Balloons)

Miss Yates / Ms Rieck -  
Friday (Games for  
understanding)

We change ourselves on  
a Friday!