

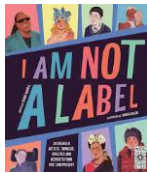
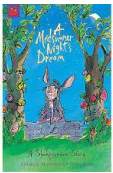
# Year 5 Curriculum Letter - Spring Term 2025

## Welcome to Year 5

We hope you had a lovely Christmas and New Year.  
Thank you very much for all the cards and generous gifts.

### English

#### Reading:

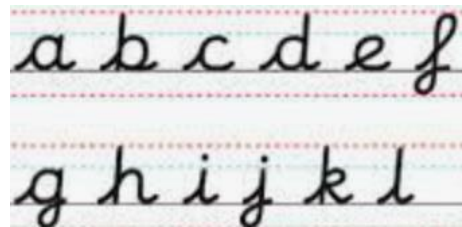


The first book that we are looking at in our reading lessons is an adaptation of Shakespeare's '**A Midsummer Night's Dream**', by Andrew Matthews and Tony Ross. The second book is '**I Am Not a Label**', by Cerrie Burnell. This is an anthology which examines the lives of a range of disabled artists, athletes, scientists and activists across the generations. Our final book of the term is '**Boy in the Tower**', by Polly Ho-Yen. The story is about an ordinary boy who lives at the top of a tower block, but whose life becomes anything but ordinary. We will monitor the children's reading using Boom Reader. Please listen to your child read at home as often as possible and record this on the app. We really appreciate your support.

#### Writing:

In writing, we will be covering a variety of exciting topics. These will include: third person stories, play scripts, formal letters of applications, poetry and biographies.

#### Handwriting:



A weekly handwriting lesson will be used to extend and polish learning that has taken place previously. Some children may have additional practice if this is helpful.

#### Spelling:

Investigations will be a regular feature of our spelling lessons and home learning. We will have weekly dictations to assess the spelling rules learned in school and practised at home.

### Maths

Essential Maths topics will cover fractions, problem solving, measures, area and perimeter, percentages and 3-D shapes. Please continue to help your child practise their multiplication tables on a regular basis. This will help in so many areas of maths, including fractions and percentages. There are many interactive on-line games you can use such as Times Table Rockstars and BBC Bitesize.

1							
$\frac{1}{2}$				$\frac{1}{2}$			
$\frac{1}{3}$		$\frac{1}{3}$		$\frac{1}{3}$		$\frac{1}{3}$	
$\frac{1}{4}$		$\frac{1}{4}$		$\frac{1}{4}$		$\frac{1}{4}$	
$\frac{1}{5}$		$\frac{1}{5}$		$\frac{1}{5}$		$\frac{1}{5}$	
$\frac{1}{6}$		$\frac{1}{6}$		$\frac{1}{6}$		$\frac{1}{6}$	
$\frac{1}{7}$		$\frac{1}{7}$		$\frac{1}{7}$		$\frac{1}{7}$	
$\frac{1}{8}$		$\frac{1}{8}$		$\frac{1}{8}$		$\frac{1}{8}$	

## Art & Design:

Our art topic this term is all about **drawing** and we will be exploring the use of line and tone as well as the different jobs that require drawing skills. Designers and architects, including William Morris, Antoni Gaudi and Zaha Hadid, will be studied and the children will experiment with different sketching techniques.



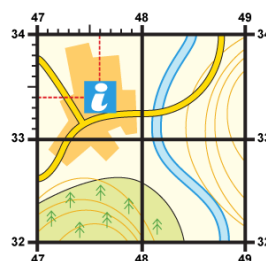
## Computing:

The spring term will cover units in both **Digital Literacy** and **Computer Science**. We will start by producing our own videos, looking carefully at the best camera angles for effect and identifying which tools to use to improve the final product. We will then move on to programming Crumble microcontrollers, focusing on real-life applications of count-controlled and conditional loops.

## Design Technology (DT):

The first DT topic for the spring term is '**Textiles**'. In this block, pupils will consider the durability of fabrics. They will design and make a functional and hard wearing lunch bag. They will create fair tests to investigate the properties of a range of fabrics and consider insulation and waterproofing. Later in the term, we will be looking at '**Structures**'.

## Geography:



Learning in Geography includes an introduction to **four and six figure grid references**, this term. The children will study lines of longitude and latitude and will learn how to precisely describe locations, landmarks and places in their work as a geographer.

## History:

After first completing the unit on the **Ancient Greeks**, our history topic later this term is a study of the **Maya civilisation**, comparing it to the Anglo Saxons c.AD 900. We will be looking at chronology and the significance of this



ancient civilisation, how it changed over time and how it might have declined.

## Leader in Me & The 8 Habits:

**Leader in Me** lessons cover leadership and all of the 8 habits. Pupils will learn to lead themselves and others, with weekly modules on topics such as perseverance, proactive language, loyalty and empathy, to name but a few. Leadership roles are an important part of daily life at Applecroft and children enjoy the responsibility and independence that they are given. They have a key part to play in the smooth running of the school.

## Modern Foreign Languages (MFL):

This term's French unit, '**Quel temps fait-il?**', teaches the vocabulary of the weather, how to ask and say what the weather is like today, how to locate different regions in France and

## Religious Education (RE) & Worldviews:

This term we are learning about **Christianity**. We will be learning about the life of Jesus as well as looking at the Easter story and the role the disciples played in the beginning of the

it will culminate in giving a forecast presentation... in French!

church. We will also be going to visit St Francis Church.

### Physical Education (P.E.):

### Personal, Social, Health & Economic Education (PSHE):

P.E. lessons will take place on Wednesdays and Fridays for both classes and will include units on **dance and tag rugby** as well as **communication and tactics** in sport. Children will need to wear their P.E. kits to school on both of these days and must have warm clothing for cold weather. Their trainers should remain in school every day as we will also be participating in the Daily Mile.

We are starting our new PSHE curriculum, EC Publishing, with a unit on relationships. This will cover lessons on **families, caring for siblings, online safety, stranger safety, friendships, peer pressure and bullying.**



### Music:

### Science

Our first music unit has a focus on **notation** and children will be learning to play the **keyboard**. We will be studying and learning to play Pachelbel's Canon, as well as a range of other simple melodies. Later in the term we will be learning how western styles such as pop, rock and jazz are structured around **riffs and grooves**. We will sing songs in unison and in three different parts, accompanying these with riffs and grooves on the keyboard.

Science this term will include physics topics on **forces and space**. We will look at forces such as friction, air resistance and water resistance and how levers, pulleys and gears work, as well as studying key scientists such as Galileo Galilei. We will find out more about our planet and solar system, including how the rotation of Earth is responsible for day and night and why we have changing seasons.



Lessons have a strong emphasis on vocabulary and retrieval of knowledge. The children will be asked to think like scientists, finding links and conducting investigations and experiments. There are links on Google Classroom to some Curriculum Vision books about forces, if the children would like to do some background reading.

### Attendance & Punctuality:

Registration takes place promptly at 8.45 and the school day runs until 3.15pm. Children should arrive from 8.35am for a 'soft start'. Punctuality is important: children arriving in class after 8.45am will be marked as late in the register. If your child is absent, please inform the school office as soon as possible. Children are expected to attend school every day, unless they are unwell.



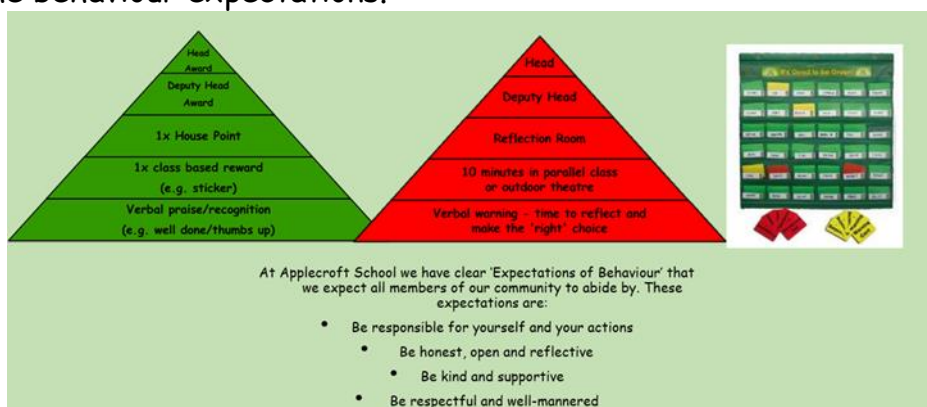
96+% = good attendance

Descriptor	Threshold attendance	Actual attendance	Whole days absent each year	Learning hours lost each year	The impact over 5 years
Excellent	100%	190 days	0	0	0
	99%	188 days	2	10	
Good	98%	186 days	4	20	
	96%	182.5 days	7.5	37.5	
Unsatisfactory	95%	180.5 days	9.5	47.5	Quarter year missed
	94%	179 days	11	55	
	93%	177 days	13	65	
	90%	171 days	19	95	Half year missed
Major issue	88%	167 days	23	115	
	86%	163 days	27	135	
	83%	158 days	32	160	
	81%	154 days	36	180	
Serious concern	80%	152 days	38	190	One whole year of school missed
Critical	75%	143 days	47	235	

97% and above - pupils with attendance at this level throughout their school career will make the best progress, this should lead to better prospects for work, college and university  
90% - pupils with attendance at this level are missing a month of school a year and may not reach their target grades. Progress will be affected and viewed negatively by employers and further education  
85% - pupils with attendance at this level will find it difficult to keep up and their chances of achieving their potential significantly damaged

## Behaviour & Discipline:

Our behaviour & discipline policy encourages positive, helpful and socially acceptable behaviour and children are aware of the school's behaviour expectations: to be responsible for yourself and your actions; to be honest, open and reflective; to be kind and supportive; to be respectful and well-mannered. In addition, both classes have created their own class mission statement to support this behaviour and their learning. The green triangle is used to recognise and reward positive behaviour and this system includes stickers, class rewards, house tokens and certificates. There are warnings and consequences for unsocial or anti-social behaviour which does not meet the behaviour expectations.



## Communication:

We will be communicating home learning to the children via Google Classroom, so please ensure they regularly log on to check for assignments and messages. We will also be updating the Year 5 page of the school website and using 'X' for school events.

If you require an urgent response, please contact us via the school office. Otherwise, our email address is: [year5@applecroft.herts.sch.uk](mailto:year5@applecroft.herts.sch.uk)

## Home Learning:

Home Learning tasks will be set as Google Classroom assignments, where appropriate. Children are expected to spend between 30 and 45 minutes on most tasks.

All home learning will be set on a Friday and will be due the following Friday.

### Key Dates:

Tuesday 21<sup>st</sup> January: Young Voices concert for choir  
Monday 17<sup>th</sup> - Friday 21<sup>st</sup> February: Half term break  
Wednesday 26<sup>th</sup> February: Music Workshop at Applecroft with Stanborough Students  
Thursday 6<sup>th</sup> March: World Book Day  
W/C Monday 10<sup>th</sup> March: Science Themed Week  
17<sup>th</sup> /18<sup>th</sup> /19<sup>th</sup> March: Dance Festival at The Hawthorne Theatre, Campus West - TBC  
Friday 28<sup>th</sup> March: Year 5 Sharing Assembly  
Tuesday 1<sup>st</sup> April: Open Afternoon  
Friday 4<sup>th</sup> April @ 2pm: End of term

**Residential Aylmerton Trip: 30<sup>th</sup> April - 2<sup>nd</sup> May 2025**

### Safeguarding:

Should you have any concerns over a child's welfare please contact any of our DSL's via the school office. Our DSL's are Ms Ruth Johnson, Mrs Lisa Withe, Mr Paul Wyatt, Ms Jale Apicella, Mrs Carey O'Connor, Mrs Natalie Clementson and Miss Eloise Yates.  
They can also be contacted via [safeguarding@applecroft.herts.sch.uk](mailto:safeguarding@applecroft.herts.sch.uk).  
If urgent please contact the school office.

### Staffing in the Year Group:

Mrs Keefe - Hockney Class (Monday-Thursday)  
Mrs Entwisle - Hockney Class (Friday)  
Miss Brown - Gormley Class  
Mrs Buck - LSA  
Mrs Syrett - 1:1 LSA  
Mrs Armstrong - 1:1 LSA  
Mrs Ma - 1:1 LSA  
Mrs Wake/Mr Passade - PPA Teachers (Wednesday morning)

## Timetable:

### Key Stage Two: Year 5 Gormley

	8:35 - 8:45am	8:45 - 8:55am	8.50 - 9:15am Session 1	9:20 - 10:20am Session 2	10:20 - 10:25 am	10:35 - 12:15pm Session 3	12:15 - 1:15 pm	1:15 - 1:45pm Session 4	1:45-3pm Session 5	3:00- 3:15pm
<b>Monday</b>	Register Early Morning Work		Music Assembly	Maths	B R E A K	Writing		Reading	CUSP History/Geography/Science/DT/ Art and Design	C L A S S  R E A D  A L O U D
<b>Tuesday</b>	Register Early Morning Work	Leader in Me		Maths		Writing	PSHE	Reading	CUSP History/Geography/Science/DT/ Art and Design	
<b>Wednesday</b>	Register Early Morning Work	Assembly	Handwriting	PE		PE	RE	Reading	CUSP History/Geography/Science/DT/ Art and Design	
<b>Thursday</b>	Register Early Morning Work	Leader in Me		Maths		Writing	Music	Reading	CUSP History/Geography/Science/DT/ Art and Design	
<b>Friday</b>	Register Early Morning Work	Achievement Assembly	Maths Arithmetic	Spellings		French	Maths	PE	Computing	

### Key Stage Two: Year 5 Hockney

	8:35 - 8:45am	8:45 - 8:55am	8.50 - 9:15am Session 1	9:20 - 10:20am Session 2	10:20 - 10:25 am	10:35 - 12:15pm Session 3	12:15 - 1:15 pm	1:15 - 1:45pm Session 4	1:45-3pm Session 5	3:00- 3:15pm
<b>Monday</b>	Register Early Morning Work		Music Assembly	Maths	B R E A K	Writing		Reading	CUSP History/Geography/Science/DT/ Art and Design	C L A S S  R E A D  A L O U D
<b>Tuesday</b>	Register Early Morning Work	Leader in Me		Maths		Writing	PSHE	Reading	CUSP History/Geography/Science/DT/ Art and Design	
<b>Wednesday</b>	Register Early Morning Work	Assembly	Maths	Handwriting		PE	PE	Reading	CUSP History/Geography/Science/DT/ Art and Design	
<b>Thursday</b>	Register Early Morning Work	Leader in Me		Maths		Writing	Music	Reading	CUSP History/Geography/Science/DT/ Art and Design	
<b>Friday</b>	Register Early Morning Work	Achievement Assembly	Maths Arithmetic	Spellings		French	RE	Computing	PE	

The order of our CUSP subjects in the afternoon is as follows:

Spring 1: Science, History, Art and Design, Geography, Design Technology

Spring 2: History, Science, Design Technology

## Uniform Expectations:

School Uniform should be worn daily and all items must be labelled. Long hair should be tied back using hair ties in school colours (red, grey or black). Black school shoes must be worn, not trainers or boots. No nail varnish or jewellery is allowed other than a pair of small stud earrings.

Our P.E. kit consists of a white T-shirt and black shorts (no branded items). A plain black sweatshirt or joggers may be worn if the weather is cold. Trainers should be in school every day for the Daily Mile. PE kits should be worn to school on Wednesdays and Fridays.

#### Uniform Expectations:

##### School Uniform:

Red jumper\* or cardigan\*  
Grey or mid-grey trousers, skirts, shorts or pinafore dresses  
Red and white checked summer dresses  
White shirts or blouses (which must be kept tucked inside)  
White polo shirts  
Smart, black shoes (boots are not permitted)  
Plain grey, white or red socks  
Grey or red tights  
Plain red, white, grey or black hair bands, clips or Alice bands only

##### P.E. Uniform (to be worn every Wednesday and Friday):

White t-shirt\*  
Plain black shorts  
Plain black jogging bottoms  
Black hooded sweatshirts\*  
Plimsolls or training shoes (for outdoor PE). Children do not wear shoes for indoor PE unless there is a medical reason.  
House T-Shirt

A small pencil case is useful to have in school daily, containing a black writing pen (not a ballpoint), pencil, eraser, sharpener, scissors, glue stick and a small selection of coloured pencils. A reading book from school or home should also be in school daily.

**As always, please feel free to contact us if you have any queries. If it is a non-urgent matter, we are usually available on Mondays after school. Please book an appointment via email, if you would like to talk to us.**

[year5@applecroft.herts.sch.uk](mailto:year5@applecroft.herts.sch.uk)

**The Year 5 Team**