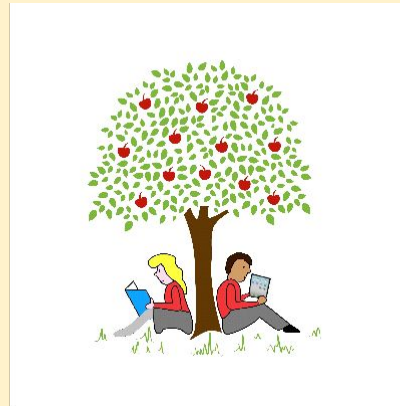




5 Gormley



# Applecroft School

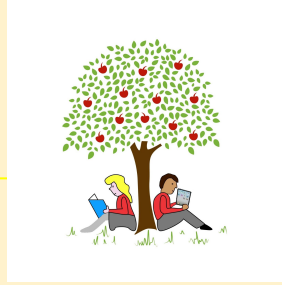
Nurturing Potential, Inspiring Minds, Changing Lives

Year 5

Welcome Meeting

5 Hockney





## Staffing

Year Group Leader: Juliet Keefe

Class Teachers:

Hockney: Juliet Keefe and Polly Entwisle

Gormley: Maisie Brown

Learning Support Assistants: Jane Buck, Claire Armstrong, Donna Syrett

PPA Lead for RE: Vikki Wake



## Staffing

### Other Important Staff:

Carey O'Connor - Phase Leader

Jale Apicella - Family Link Support Worker

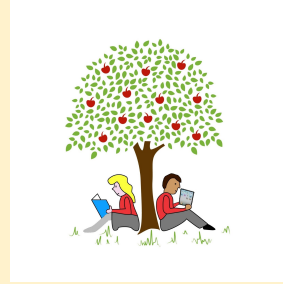
Lisa Withe - Headteacher

Paul Wyatt - Deputy Headteacher

Ruth Johnson - Assistant Headteacher for  
Inclusion & Well-Being (also our SENDCo)

Odette Coe & Gill Williams - Lead First Aiders

# Safeguarding



Descriptor	Threshold attendance	Actual attendance	Whole days absent each year	Learning hours lost each year	The impact over 5 years
Excellent	100%	190 days	0	0	0
	99%	188 days	2	10	
Good	98%	186 days	4	20	
	96%	182.5 days	7.5	37.5	
Unsatisfactory	95%	180.5 days	9.5	47.5	Quarter year missed
	94%	179 days	11	55	
	93%	177 days	13	65	
Major issue	90%	171 days	19	95	Half year missed
	88%	167 days	23	115	
	86%	163 days	27	135	
	83%	158 days	32	160	
Serious concern	81%	154 days	36	180	One whole year of school missed
	80%	152 days	38	190	
Critical	75%	143 days	47	235	

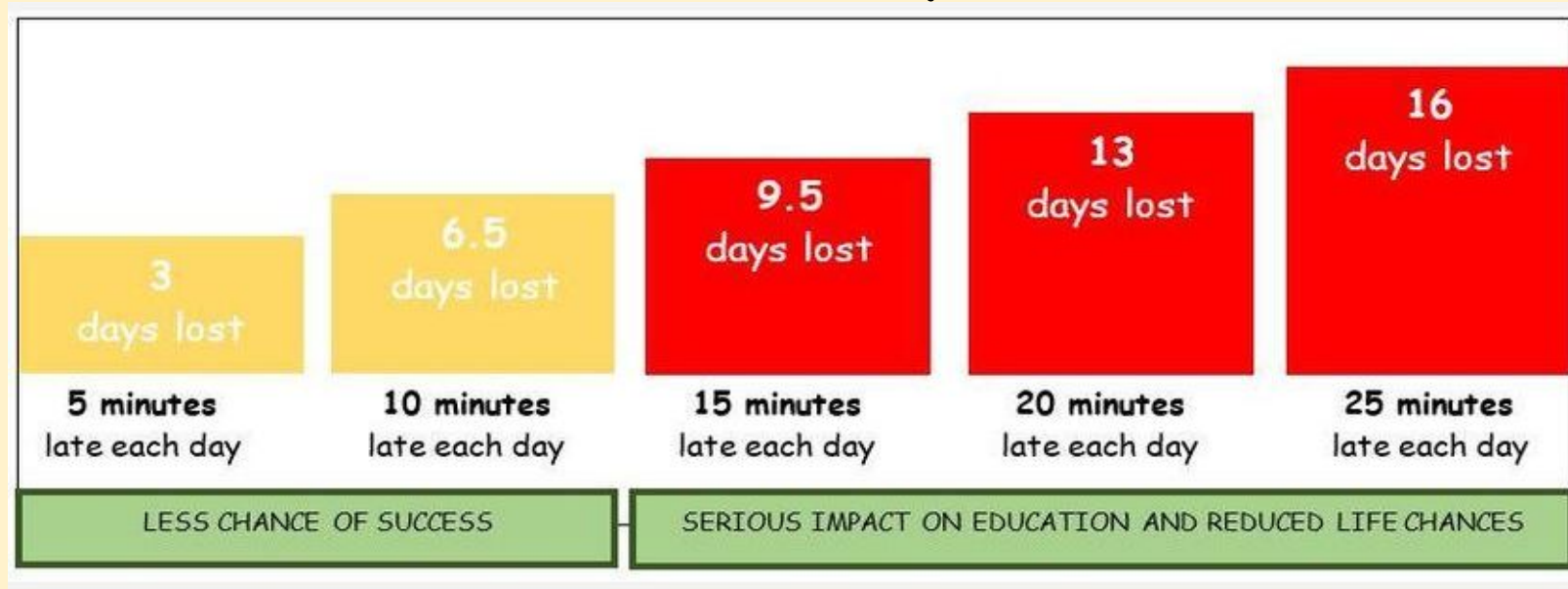
**97%** and above - pupils with attendance at this level throughout their school career will make the best progress, this should lead to better prospects for work, college and university  
**90%** - pupils with attendance at this level are missing a month of school a year and may not reach their target grades. Progress will be affected and viewed negatively by employers and further education  
**85%** - pupils with attendance at this level will find it difficult to keep up and their chances of achieving their potential significantly damaged

### Attendance - 96% or above

We won't authorise holidays during the term. We ask that routine (non-emergency) dentist & doctor appointments take place out of the school day whenever possible.

We are here to support - contact Jale Apicella (Family Link Support Worker) or your child's class teacher.

# Punctuality



**Lessons begin at 8:45am sharp - gates open at 8:30am and doors to the school building at 8:35am.**

**The Registration period is 8:35-8:45am - children should be in their classroom by 8:45am when the register closes.**

**Children don't like arriving late - it's embarrassing, interrupts the lesson and does not evoke positive emotions in your child - they also miss key messages and learning.**

**We are here to support - contact Jale Apicella (Family Link Support Worker) or your child's class teacher.**

Many Hands Make Light Work



Thank You For Being So Kind

## Parent Volunteers

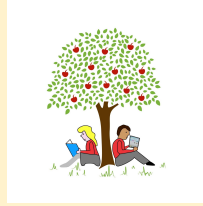
We would like to welcome back our wonderful parent volunteers.

If you are interested in supporting the children in school you will need to attend one of the two planned volunteer meetings

Monday 16th @ 2:30pm

or

Friday 20th September @ 2:30pm



## Behaviour and Discipline Policy

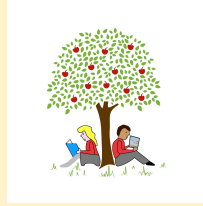
### Applecroft School's Expectations of Behaviour:

At Applecroft School we have clear 'Expectations of Behaviour' that we expect all members of our community to abide by. These expectations are:

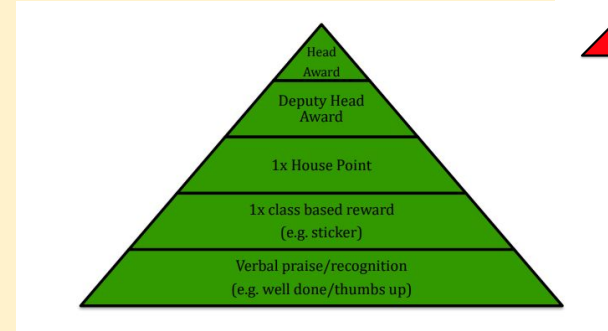
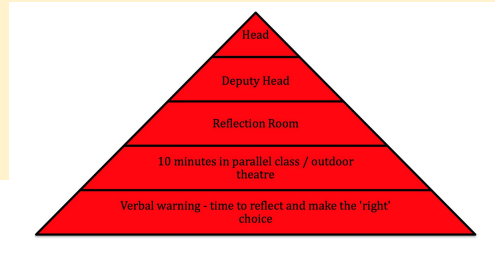
- Be responsible for yourself and your actions
- Be honest, open and reflective
- Be kind and supportive
- Be respectful and well-mannered

This applies to our whole community.

In addition to the overarching school's 'Expectations of Behaviour', individual classes create their own Class Mission Statement which is displayed in the classroom and on the door.



## Good To Be Green



The **green triangle** shows the daily 5-point system used to recognise pro-social behaviour in school. The children are able to move up the triangle by showing pro-social behaviours and demonstrating the school's shared values. If a child moves 'up the green' they do so by moving their name label onto the appropriate level of the triangle. At the end of each day all children are re-set to the bottom of the triangle again. Rewards for the class and the houses can be won and they can also receive a special reward from the Deputy Head or Headteacher.

This all works in partnership with the '**Good to be Green**' chart and the **red triangle** for anti-social behaviour. For more details, the Behaviour and Discipline Policy is on the school website.

**Senso** software monitors school devices including Chromebooks & computers and alerts DSLs - where necessary this will be shared with parents and the Behaviour and Discipline policy applied.



## **School Uniform**

**Grey trousers/shorts/skirt**

**White polo shirt/blouse**

**Red jumper/cardigan**

**Black shoes**

**White/grey/red socks**

*Long hair should be tied back*

*Red hair accessories only*

*Stud earrings only*

*No nail varnish or motifs in hair*

*Black school shoes - not boots*

**PE Kit:**

White T-shirt

Black shorts

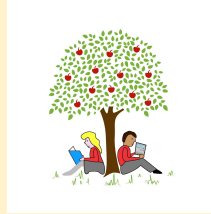
House T-shirt

Trainers

Black joggers (for cold weather)

Black hooded school sweatshirt  
(optional)

**All clothing must be named**



## Additional Kit

It is useful if children have their own pencil cases. The following equipment is used regularly and many of these items can be bought quite cheaply from our school shop (open daily) or uniform shop.

### Pencil Case:

HB pencils

Sketching pencils (e.g. 3b)

Coloured pencils

Black handwriting pens

30cm transparent ruler

Scissors

Protractor

Highlighters

**Glue sticks (really useful to have your own)**

**Named lunch box (if needed) - to be kept on trolley not in locker**



# Independent Travellers

In Years 5 and 6, the children are allowed to walk home on their own **only with permission from parents/carers**. If you give permission for your child to be an independent traveller, they can:

- walk home as agreed by you, or
- meet an adult in the playground/in a nearby road etc.

The latter is perhaps the first step to becoming a fully independent traveller. If your child is not an independent traveller, we will pass them over to you in the playground.

Please make sure you have given us the information we require. [Y5/6 Independent Traveller Form](#)

If children have **mobile phones** they must be signed in during registration. The devices will be locked away in a cupboard until the the end of the day, when the children can sign them out again.

**Smart watches** can be worn during the school day providing they are only being used as a normal watch and for no other function beyond telling the time. Any camera, messaging, telephone call services and internet connectivity must be disabled whilst in school (school mode).

**Air tags can be used to track Independent Travellers, but are not to be taken on school trips.**



## Important Reminders

School Lunches - please order in advance

Healthy Snacks only (e.g. fruit, vegetables, cereal bars)

*Just a reminder that we are a **nut free school**, so please bear this in mind when preparing snacks.*

Positive Feedback & Suggestion boxes/emails

Polite reminder: if coming to school on a bike or scooter - please be respectful and mindful of other families and wait outside the school, off your bike until the gate opens

## Important Dates



More information about the curriculum will be on the curriculum letter.

- Monday 16th & Friday 20th September at 2:30pm: Volunteer Meeting & Safeguarding Training
- Tuesday 24th September: Individual Photos
- Wednesday 25th September 1.00-2.45pm: Y5 Fun Run at Stanborough Lakes
- W/c Monday 21st October: Arts Themed Week
- **W/c Monday 28th October: Half Term Break**
- Friday 8th November: PTA Fireworks
- Tuesday 12 November: Young Shakespeare Company
- **Friday 6th December: Occasional Day**
- Tuesday 10th December at 1.30pm and 6.00pm: Christmas Show x2
- Thursday 12th December at 6.00pm: Christmas Show
- Friday 13th December: Gordon Craig Theatre Panto Trip
- Thursday 19th December: Christmas Lunch/Christmas Jumper Day
- Thursday 19th December at 3.00pm: Carols on the Playground
- Friday 20th December at 2.00pm: End of Term
- **Wednesday 30th April - Friday 2nd May: Residential Aylmerton Trip**



## Communication between home and school

- We will have 2 scheduled consultations, one in the Autumn Term and one in the Spring Term. We might contact you at other times if we have concerns about your child.
- Year 5 Surgery - if you have any questions or concerns, we are usually available on Mondays from 3.30-4.00pm. A ten-minute appointment can be requested via the school office or the Year 5 email address (if made in advance). This appointment can take place face to face, online or via telephone.
- If you have an urgent message please contact the school office.
- Please only use the Year 5 email ([year5@applecroft.herts.sch.uk](mailto:year5@applecroft.herts.sch.uk)) for non-urgent enquiries as we are not able to check this whilst teaching.
- We will use Google Classroom to send messages directly to the children, including information regarding home learning. [Year 5 \(24-25\)](#)
- Twitter and the school website will also be used/updated when appropriate.

# The Curriculum

## YOAP

The year on a page document (YOAP) is available on the Year 5 page of the school website

Year 5 2024-2025



Y5 Welcome  
Meeting  
11.09.25



Curriculum  
Letters



Timetables



Year on a Page  
- Long Term  
Curriculum

# The School Day - An Overview



## Key Stage Two: Year 5 Autumn 24

	8:35 - 8:45am	8:45 - 8:55am	8.50 - 9:15am Session 1	9:20 - 10:20am Session 2	10:20 - 10:35 am	10:35 - 12:15pm Session 3	12:15 - 1:15 pm	1:15 - 1:45pm Session 4	1:45-3pm Session 5	3:00- 3:15pm	
Monday	Register Lit Gold		Music Assembly	Maths	B R E A K	Writing		L U N C H	Reading	CUSP History/Geography/Science/DT/ Art and Design	C L A S S  R E A D  A L O U D
Tuesday	Register Maths Fluency	Leader in Me		Maths		Writing	PSHE		Reading	CUSP History/Geography/Science/DT/ Art and Design	
Wednesday	Register Maths Fluency		Assembly	Maths		Handwriting	PE		Reading	CUSP History/Geography/Science/DT/ Art and Design	
Thursday	Register Lit Gold	Leader in Me		Maths		Writing	Music		Reading	CUSP History/Geography/Science/DT/ Art and Design	
Friday	Register Maths Fluency		Achievement Assembly	Maths Arithmetic		Spellings	French		RE	Reading	



## Home Learning

**Most home learning will be set on Google Classroom.**

The due date for each piece is clearly visible on the assignment and the children need to avoid work slipping into their missing list.

If they check their 'to do' list on a regular basis, this should not happen.

If a child has difficulty completing their work at home, they will be invited to a home learning lunchtime club.

If they have an issue with any assignment, please encourage them to write a comment to us and hand in the work.

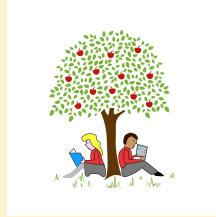
**(Now that the children are in Y5, they are expected to communicate any difficulties to us themselves, rather than parents making comments, although there might be occasional exceptions to this.)**

We can then reply, give advice or support, and return it for them to resubmit if appropriate.

**All home learning across the school will now be set on a Friday, to be handed in by the following Friday.**

Day Set	Subject	Due in
Friday	Science	Friday
Friday	Maths	Friday
Friday	English	Friday

- 5x Reading per week (see next slide)
- Maths, English & Science set weekly
- Occasional tasks, usually topic or art
- 30 - 45 minutes per activity



## Reading - Boom Reader Parent Support

Please ensure that your child reads at home regularly (5x per week) to encourage a love of reading. This can be the scheme books, if they have been given these, but also other books at home or from the school library.

In Y5, children can be more independent and log their own reading, but we would still like parents to read with their child (and log it) once out of the 5 times.

Those who log five reading sessions will be rewarded with a bonus gem!

We will also have a class reading book and encourage the children to read books from our Recommended Reads, which is a collection designed to inspire children.



# CUSP Literature Spine

## Year 5

Autumn 1	Autumn 2	Spring 1	Spring 2	Summer 1	Summer 2
<b>Block 1:</b> Shackleton's Journey	<b>Block 4:</b> Secrets of a Sun King	<b>Block 7:</b> A Midsummer Night's Dream	<b>Block 10:</b> Boy in the Tower	<b>Block 13:</b> The Explorer	<b>Block 16:</b> Five Children and IT
<b>Block 2:</b> Shackleton's Journey	<b>Block 5:</b> Secrets of a Sun King	<b>Block 8:</b> I Am Not A Label	<b>Block 11:</b> Boy in the Tower	<b>Block 14:</b> The Explorer	<b>Block 17:</b> Five Children and IT
<b>Block 3:</b> Shackleton's Journey	<b>Block 6:</b> Secrets of a Sun King & If Rudyard Kipling	<b>Block 9:</b> I Am Not A Label	<b>Block 12:</b> Boy in the Tower & Daffodils William Wordsworth	<b>Block 15:</b> The Explorer	<b>Block 18:</b> Five Children and IT



## Updates

### Books:

The school has invested thousands of pounds in books over the past few years including resourcing the Little Wandle scheme, reading curriculum and libraries

If a book is returned to school damaged or not returned at all, the school will write to parents/carers requesting payment for a replacement book.

Thank you for your support and understanding.



## Updates

### Birthday Books:

For children's birthdays/special events **sweets are no longer permitted** and from now on will not be distributed to the children.

There is **no expectation that anything needs to be purchased** however, if you want to mark the special occasion we will continue to accept 'Birthday Books'.

Each 'Birthday Book' received will have a special sticker on the inside cover displaying who donated it and on which birthday. The book will then be added to your child's class library.

# Log-ins

## Curriculum Visions:

Username - **Applecroft/1**

Password: **Newton**

**Boom Reader:** School Code: **50486**

Children have their own 5-digit login.

## MyMaths:

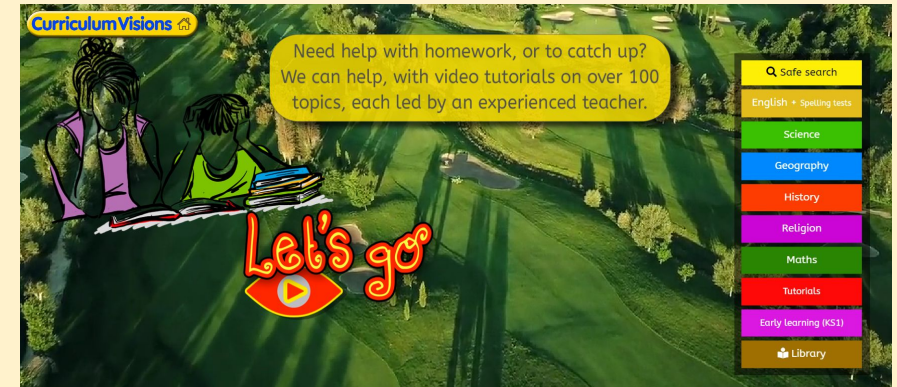
School username: **applecroft**

School password: **divide137**

Each child has their own portal user name and password.

Please do come and collect copies of your child's Boom Reader

and MyMaths logins at the end of this session.





We are looking forward to working with you and your children.

Thank you for your support.

Any Questions?