

Year 6 Curriculum Letter - Spring Term 2026

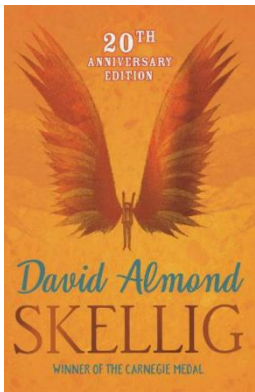
We hope you all had a lovely Christmas and New Year! Thank you very much for your generous gifts - we really appreciate them. As we start our spring term, we would like to share with you some of the work we will be covering.



SATs Your children will be sitting the statutory tests for Key Stage 2 this year. SATs week is from Monday 11th May to Thursday 14th May 2026 and will include tests in Maths, Reading and SPAG (spelling, punctuation, and grammar). Maths and Grammar revision books will be provided by the school and we will support children to confidently approach the tests with practice papers and revision guides.

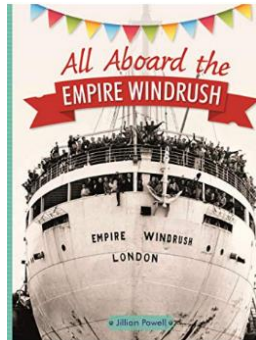
English

Reading:



In our whole class reading we will begin the term with '**Skellig**' by David Almond. All children will have their own copy of the text and home learning may include reading preparation for future lessons.

Our main text in the second half of term will be '**All Aboard The Empire Windrush**' which links to our History Learning. The children will develop their reading comprehension skills with this and other related texts in a daily reading lesson.



Daily reading at home is expected.

Writing:

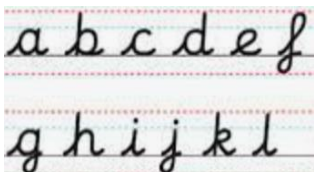
We will start the term by writing balanced arguments before moving on to narrative pieces, using dialogue to advance a story and extend our understanding of how to write effective non-chronological reports.

We will develop composition and grammar skills in these lessons. Grammar knowledge will also be consolidated alongside our spelling learning.

Any home learning which requires a written outcome should reflect the learning and expectations of our writing lessons.

Reading diverse and vocabulary rich texts will support children's writing with good models and ideas which they can use in their writing.

Handwriting:

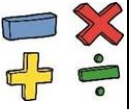


A weekly handwriting lesson will be used to extend and polish learning that has taken place previously.

Spelling:

Direct teaching of spelling takes place weekly and includes spelling rules, phonetic, morphemic and etymological exploration. Investigations will be a regular feature of our spelling lessons and home learning.

Maths



We will continue to follow the Essential Maths programme. This term we will cover fractions, shape, ratio and proportion and statistics as well as continuing to develop and apply arithmetic skills in a problem solving context. Please help your child to practise and consolidate learning in home learning tasks. Using maths at home in everyday situations such as cooking and shopping will also help mathematical confidence and agility. There are many interactive on-line games you can use such as: Times Table Rockstars and BBC Bitesize games.

Art & Design



Our Art lessons this year will include studies of both the class artists.



In this term's unit on **Drawing**, we will look at how artists such as Leonardo da Vinci and Hector Gonzalez use drawing techniques and will focus particularly on pencil portraits.

Computing

Having moved **Web Design** into Autumn, we will start the term by constructing and manipulating 3D digital models using Tinkercad for our '**Creating Media**' topic.



In our second topic, which is **Information Technology**, we will explore how computers communicate and how we can work collaboratively online.

Design Technology (DT)



In DT this term, we will be exploring the question - Does Food affect the way you feel? We will be investigating the basic food groups and finding out about the difference between slow release and quick release carbohydrates.

We will also be entering the K'Nex Challenge, a Hertfordshire competition run by Stempoint.

Geography

This term, Year 6 will be focusing on Human Geography in our topic 'Settlements, Land Use and Economic Activity'. We will be looking at patterns of human activity created around physical features of the land, transport and trade links and consider migration over time, linking to our History topic this term.



History



Our history topic is '**The Windrush Generation**'. We will be learning about the post war rebuilding of Britain and the practical and cultural contribution made by the settlers from the Caribbean who were invited to Britain from 1948.

Leader in Me & The 8 Habits

We will continue to develop leadership in all our pupils and explore how the 8 habits can support us to be proactive and effective learners and leaders.



Modern Foreign Languages (MFL):



This term in French we will be covering the '**Le Weekend**' topic.

We will be learning the language associated with weekend activities. We will be recapping on how to tell the time in French, learning the vocabulary for different leisure activities and how to talk about them.

Music

This half term's topic is '**Singing - Exploring Structure**.

We will identify cyclic patterns including verse, chorus and coda.



In the second half of the term we will develop **instrumental skills with tuned instruments**, learning piano keyboard skills and exploring musical notation.

Physical Education (P.E):



P.E lessons will take place on Tuesdays and Thursdays for both classes. We will cover **dance, hockey and orienteering**.

Children should wear their P.E kits to school on these days and must have warm clothing to wear when the weather turns cold. Trainers should remain in school every day to allow children to participate in the Daily Mile.

Personal, Social, Health & Economic Education (PSHE):

This term in PSHE we will be considering themes of identity, community, diversity and celebrating differences in our unit 'Living in the Wider World'. This will then lead onto looking at attitudes towards money.

We will also strengthen our previous learning around online privacy and social media by participating in Safer Internet Day on Tuesday 10th February 2025.

Religious Education (RE) & Worldviews:

This term, Year 6 will be exploring the non-religious worldview: Humanism. We will explore our own worldviews and the influences of our worldviews. We will learn about influential Humanists and key beliefs held by many Humanists.

Science

The Science topics are **Light and Living Things and their Habitats**.

Science will have a strong practical emphasis and the children will be asked to think like a scientist, devising their own investigations and experiments. We will also be investigating the work of the scientist Carl Linnaeus.



Attendance & Punctuality:



Registration takes place promptly at 8.45am and the school day runs until 3.15pm. Children should arrive from 8.35am for a 'soft start'. Children complete early morning work during this period before assembly. Punctuality is important: children arriving in class after 8.45am will be marked as late in the register. If your child is absent,

please inform the school office as soon as possible. Children are expected to attend school every day, unless they are unwell. 96%+ = good attendance

Behaviour & Discipline:

Our Behaviour Policy encourages positive, helpful and socially acceptable behaviour and children are aware of the school's behaviour expectations: to be responsible for yourself and your actions; to be honest, open and reflective; to be kind and supportive; to be respectful and well-mannered. In addition both classes have created their own class mission statement to support this behaviour and their learning. The green triangle is used to recognise and reward positive behaviour and this system includes class rewards, house tokens and certificates. There are warnings and consequences for detrimental behaviour which does not meet the behaviour expectations.



Home Learning:



Home learning will be set on Google Classroom on Fridays and will be due the following Friday. We will discuss with the children how they can be proactive and organise their week to complete tasks on time. Please support your child to develop good habits by managing their home learning over the course of the week. Home learning is set for Maths, Reading and Spelling, as well as pre-reading for foundation subjects using Curriculum Visions.

Key Dates:

Maths Day - Friday 6th February 2026

Safer Internet Day - Tuesday 10th February 2026

Half term - Monday 16th - Friday 20th February 2026

Young Voices Concert (Choir) - Wednesday 25th February 2026

National Allocation Day (secondary schools) - Monday 2nd March 2026

World Book Day - Thursday 5th March 2026

Last Day of Spring Term - Friday 27th March - School finishes at 2pm

Y6 SATs Week - Monday 11th - Thursday 14th May 2026

Residential Information Meeting for Parents/Carers - Tuesday 19th May @ 9am in the Main Hall

Residential Trip PGL - Monday 15th - Friday 19th June 2026

Safeguarding:

Should you have any concerns over a child's welfare please contact any of our DSLs via the school office. Our DSLs are Mrs Ruth Johnson, Mrs Lisa Withe, Mr Paul Wyatt and Ms Jale Apicella. They can also be contacted via safeguarding@applecroft.herts.sch.uk. If urgent please contact the school office.

Staffing in the Year Group:

Mrs O'Connor - Y6 Lead, Warhol Class Teacher and Upper KS2 Phase Leader

Mrs Boulton - Moore Class (Monday, Tuesday)

Mrs Brandon - Moore Class (Wednesday, Thursday, Friday)

Mrs Parnham and Ms Syrett - Y6 LSAs
Mrs Wake/Mr Passade - PPA Teachers (Thursday pm)

Timetable:

The timetable for the Spring term in Year 6 includes P.E on Tuesday and Thursday.

Key Stage Two: Year 6 Spring 2025

8.35 Soft Start EMW	8:45	8:45 -8:55	9.00 -9:15	9:20 - 10:20am	10:20 10:35	10:35 - 11.15	11.15 - 12:15	12:15-1:15	1:15-1:45	1:45-3.00	3-3:15	
Monday	Reg	EMW	Music Assem.	Maths	B R E A K	Reading	Writing	L U N C H	Spelling/ Handwriting	Foundation / CUSP	C L A S S R E A D A L O U D	
Tuesday	Reg	EMW	Leader in Me	Maths		Reading	PE (PPA)		Writing	Foundation/CUSP		
Wednesday	Reg	EMW	Curruc. Assem.	Maths		Reading	Writing		PSHE	Foundation/CUSP		
Thursday	Reg	EMW	Leader in Me	Maths		Reading	Writing		LIM: Plus/ Delta	PE (PPA)		RE (PPA)
Friday	Reg	EMW	Achieve Ass.	Maths		Spelling/ Handwriting	Writing		Reading	Foundation/CUSP		

There may be occasional variations to the timetable, for example when outside visitors attend.

Year on a Page

Please see the Year 6 Page for a link to this document: [Year Six | Applecroft School](#)

Uniform Expectations:

School Uniform should be worn daily and all items must be labelled. Long hair should be tied back and hair ties in school colours (red, black). Black school shoes, not trainers or boots. No nail varnish or jewellery is allowed other than a pair of small stud earrings.

P.E kit: White T-shirt and black shorts (no branded items). A plain black sweatshirt or joggers may be worn if the weather is cold. Trainers should be in school every day for the Daily Mile.

P.E kits should be worn to school on **Tuesday** and **Thursday** (both classes).

A **small pencil case** containing black writing pen (not ball point), pencil, eraser, sharpener, scissors, glue stick and protractor should be in school daily. Children will also need a small selection of colour pencils and a set of highlighters. A reading book from school or home should also be in school daily. Watercolour palettes, a brush and art pencils may be brought in optionally.



All stationery items are available in the school shop which is open each morning.

Art shirts: Please ensure your child has their own art shirt in school - to be kept in their locker.

Communication:

Please contact us via email for non-urgent matters: admin@applecroft.herts.sch.uk

For urgent matters, please contact the school office.